

Part Name	Material			
Bearing Rings	AISI440C	AISI440B	AISI304	AISI316
Balls	AISI440C	AISI440		AISI316
Retainer	AISI304	Nylon/PA6.6		
Shield	AISI304			

Material	C%	Cr%	Si%	Mn%	S%	P%	Mo%	Ni%
AISI440C	0.90-1.05	17-19	≤ 0.8	≤ 0.7	≤ 0.03	≤ 0.035		
AISI440B	0.75-0.90	17-19	≤ 0.8	≤ 0.8	≤ 0.03	≤ 0.035	1-1.3	
AISI304(304L)	0.08(0.03)	18-20	≤ 1.0	≤ 2.0	≤ 0.03	≤ 0.035		8-10.5(9-13)
AISI316(316L)	0.08(0.03)	16-18	≤ 1.0	≤ 2.0	≤ 0.03	≤ 0.035	2-3	10-14

Stainless Steel Ball Bearings

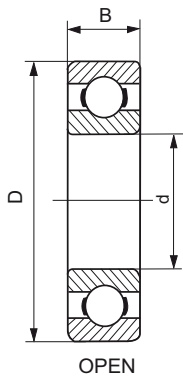
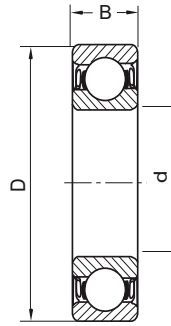
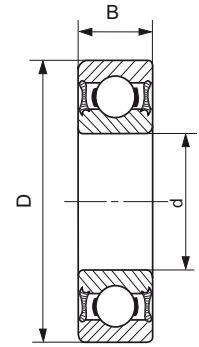
SS 6000 SS 6200 SS 6300 SS 6800 SS 6900 ...

Stainless Steel Miniature Bearings

Stainless Steel Thrust Ball Bearings

SS 51100 ...

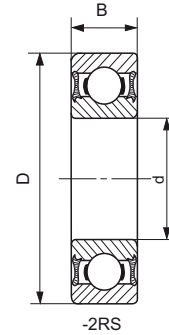
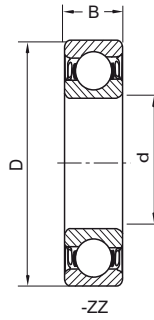
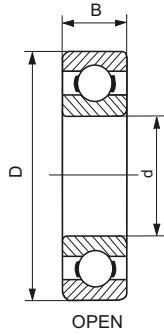



OPEN

-ZZ

-2RS

Bearing No.	d	D	B (mm)	Weight (kg)	Bearing No.	d	D	B (mm)	Weight (kg)
SS 6000-2RS	10	26	8	0.019	SS 6200-2RS	10	30	9	0.032
SS 6001-2RS	12	28	8	0.022	SS 6201-2RS	12	32	10	0.037
SS 6002-2RS	15	32	9	0.03	SS 6202-2RS	15	35	11	0.045
SS 6003-2RS	17	35	10	0.039	SS 6203-2RS	17	40	12	0.065
SS 6004-2RS	20	42	12	0.069	SS 6204-2RS	20	47	14	0.110
SS 6005-2RS	25	47	12	0.08	SS 6205-2RS	25	52	15	0.130
SS 6006-2RS	30	55	13	0.12	SS 6206-2RS	30	62	16	0.200
SS 6007-2RS	35	62	14	0.16	SS 6207-2RS	35	72	17	0.290
SS 6008-2RS	40	68	15	0.19	SS 6208-2RS	40	80	18	0.370
SS 6009-2RS	45	75	16	0.25	SS 6209-2RS	45	85	19	0.410
SS 6010-2RS	50	80	16	0.26	SS 6210-2RS	50	90	20	0.460
SS 6011-2RS	55	90	18	0.39	SS 6211-2RS	55	100	21	0.610
SS 6012-2RS	60	95	18	0.42	SS 6212-2RS	60	110	22	0.780

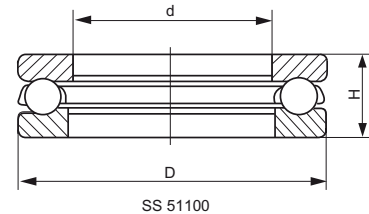
Bearing No.	d	D	B (mm)	Weight (kg)	Bearing No.
SS 6300-2RS	10	35	11	0.053	SS 681 - SS 629 2RS
SS 6301-2RS	12	37	12	0.060	
SS 6302-2RS	15	42	13	0.082	
SS 6303-2RS	17	47	14	0.120	
SS 6304-2RS	20	52	15	0.140	
SS 6305-2RS	25	62	17	0.230	
SS 6306-2RS	30	72	19	0.350	
SS 6307-2RS	35	80	21	0.460	
SS 6308-2RS	40	90	23	0.630	
SS 6309-2RS	45	100	25	0.830	
SS 6310-2RS	50	110	27	1.050	

Dimensions see at page 17.
Abmessung siehe Seite 17.



Bearing No.	d	D	B (mm)	Weight (kg)	Bearing No.	d	D	B (mm)	Weight (kg)
SS 6800-2RS	10	19	5	0.055	SS 6900-2RS	10	22	6	0.01
SS 6801-2RS	12	21	5	0.063	SS 6901-2RS	12	24	6	0.011
SS 6802-2RS	15	24	5	0.0074	SS 6902-2RS	15	28	7	0.016
SS 6803-2RS	17	26	5	0.0082	SS 6903-2RS	17	30	7	0.018
SS 6804-2RS	20	32	7	0.018	SS 6904-2RS	20	37	9	0.038
SS 6805-2RS	25	37	7	0.022	SS 6905-2RS	25	42	9	0.045
SS 6806-2RS	30	42	7	0.027	SS 6906-2RS	30	47	9	0.051
SS 6807-2RS	35	47	7	0.030	SS 6907-2RS	35	55	10	0.080
SS 6808-2RS	40	52	7	0.034	SS 6908-2RS	40	62	12	0.120
SS 6809-2RS	45	58	7	0.040	SS 6909-2RS	45	68	12	0.140
SS 6810-2RS	50	65	7	0.052	SS 6910-2RS	50	72	12	0.140
SS 6811-2RS	55	72	9	0.083	SS 6911-2RS	55	80	13	0.190
SS 6812-2RS	60	78	10	0.110	SS 6912-2RS	60	85	13	0.200

All Types also available in OPEN and in ZZ
 Alle Typen auch in OFFEN und ZZ erhältlich



Bearing No.	d	D	H (mm)	Weight (kg)
SS 51100	10	24	9	0.020
SS 51101	12	26	9	0.022
SS 51102	15	28	9	0.024
SS 51103	17	30	9	0.025
SS 51104	20	35	10	0.037
SS 51105	25	42	11	0.056
SS 51106	30	47	11	0.063
SS 51107	35	52	12	0.080
SS 51108	40	60	13	0.120
SS 51109	45	65	14	0.140
SS 51110	50	70	14	0.160
SS 51111	55	78	16	0.230
SS 51112	60	85	17	0.200
SS 51113	65	90	18	0.330
SS 51114	70	95	18	0.350
SS 51115	75	100	19	0.400
SS 51116	80	105	19	0.420