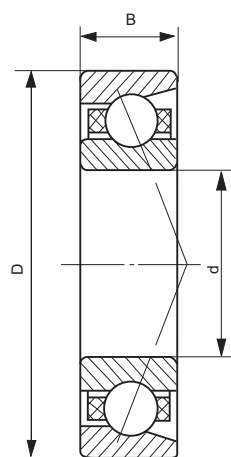


| Bearing No. | d | D | B (mm) | Weight (kg) | Bearing No. | d | D | B (mm) | Weight (kg) |
|-----------------------|----|-----|--------|-------------|-----------------------|----|-----|--------|-------------|
| 3200 3200 ZZ 3200-2RS | 10 | 30 | 14.3 | 0.049 | | | | | |
| 3201 3201 ZZ 3201-2RS | 12 | 32 | 15.9 | 0.057 | | | | | |
| 3202 3202 ZZ 3202-2RS | 15 | 35 | 15.9 | 0.064 | 3302 3302 ZZ 3302-2RS | 15 | 42 | 19 | 0.132 |
| 3203 3203 ZZ 3203-2RS | 17 | 40 | 17.5 | 0.096 | 3303 3303 ZZ 3303-2RS | 17 | 47 | 22.2 | 0.181 |
| 3204 3204 ZZ 3204-2RS | 20 | 47 | 20.6 | 0.153 | 3304 3304 ZZ 3304-2RS | 20 | 52 | 22.2 | 0.217 |
| 3205 3205 ZZ 3205-2RS | 25 | 52 | 20.6 | 0.175 | 3305 3305 ZZ 3305-2RS | 25 | 62 | 25.4 | 0.362 |
| 3206 3206 ZZ 3206-2RS | 30 | 62 | 23.8 | 0.286 | 3306 3306 ZZ 3306-2RS | 30 | 72 | 30.2 | 0.553 |
| 3207 3207 ZZ 3207-2RS | 35 | 72 | 27 | 0.436 | 3307 3307 ZZ 3307-2RS | 35 | 80 | 34.9 | 0.766 |
| 3208 3208 ZZ 3208-2RS | 40 | 80 | 30.2 | 0.590 | 3308 3308 ZZ 3308-2RS | 40 | 90 | 36.5 | 1.010 |
| 3209 3209 ZZ 3209-2RS | 45 | 85 | 30.2 | 0.640 | 3309 3309 ZZ 3309-2RS | 45 | 100 | 39.7 | 1.340 |
| 3210 3210 ZZ 3210-2RS | 50 | 90 | 30.2 | 0.689 | 3310 3310 ZZ 3310-2RS | 50 | 110 | 44.4 | 1.810 |
| 3211 3211 ZZ 3211-2RS | 55 | 100 | 33.3 | 0.986 | 3311 3311 ZZ 3311-2RS | 55 | 120 | 49.2 | 2.320 |
| 3212 3212 ZZ 3212-2RS | 60 | 110 | 36.5 | 1.270 | 3312 3312 ZZ 3312-2RS | 60 | 130 | 54 | 3.050 |
| 3213 3213 ZZ 3213-2RS | 65 | 120 | 38.1 | 1.570 | 3313 3313 ZZ 3313-2RS | 65 | 140 | 58.7 | 3.960 |
| 3214 3214 ZZ 3214-2RS | 70 | 125 | 39.7 | 1.800 | 3314 3314 ZZ 3314-ZRS | 70 | 150 | 63.5 | 4.740 |

3000 Series Dimensions are same as 5000 Series.

Baureihe 3000 entspricht den Abmessungen der Baureihe 5000.



7000

| Bearing No. | d | D | B (mm) | Weight (kg) | Bearing No. | d | D | B (mm) | Weight (kg) |
|-----------------------|-----|-----|--------|-------------|-------------|-----|-----|--------|-------------|
| 7200B TN 7200B TN 2RS | 10 | 30 | 9 | 0.030 | | | | | |
| 7201B TN 7201B TN 2RS | 12 | 32 | 10 | 0.036 | | | | | |
| 7202B TN 7202B TN 2RS | 15 | 35 | 11 | 0.045 | | | | | |
| 7203B TN 7203B TN 2RS | 17 | 40 | 12 | 0.065 | 7303B | 17 | 47 | 14 | 0.11 |
| 7204B TN 7204B TN 2RS | 20 | 47 | 14 | 0.11 | 7304B | 20 | 52 | 15 | 0.14 |
| 7205B TN 7205B TN 2RS | 25 | 52 | 15 | 0.13 | 7305B | 25 | 62 | 17 | 0.23 |
| 7206B TN 7206B TN 2RS | 30 | 62 | 16 | 0.20 | 7306B | 30 | 72 | 19 | 0.34 |
| 7207B TN 7207B TN 2RS | 35 | 72 | 17 | 0.28 | 7307B | 35 | 80 | 21 | 0.45 |
| 7208B TN 7208B TN 2RS | 40 | 80 | 18 | 0.37 | 7308B | 40 | 90 | 23 | 0.63 |
| 7209B TN 7209B TN 2RS | 45 | 85 | 19 | 0.42 | 7309B | 45 | 100 | 25 | 0.85 |
| 7210B TN 7210B TN 2RS | 50 | 90 | 20 | 0.47 | 7310B | 50 | 110 | 27 | 1.10 |
| 7211B | 55 | 100 | 21 | 0.62 | 7311B | 55 | 120 | 29 | 1.40 |
| 7112B | 60 | 110 | 22 | 0.80 | 7312B | 60 | 130 | 31 | 1.75 |
| 7213B | 65 | 120 | 23 | 1.00 | 7313B | 65 | 140 | 33 | 2.15 |
| 7214B | 70 | 125 | 24 | 1.10 | 7314B | 70 | 150 | 35 | 2.65 |
| 7215B | 75 | 130 | 25 | 1.20 | 7315B | 75 | 160 | 37 | 3.20 |
| 7216B | 80 | 140 | 26 | 1.45 | 7316B | 80 | 170 | 39 | 3.80 |
| 7217B | 85 | 150 | 28 | 1.85 | 7317B | 85 | 180 | 41 | 4.45 |
| 7218B | 90 | 160 | 30 | 2.30 | 7318B | 90 | 190 | 43 | 5.20 |
| 7219B | 95 | 170 | 32 | 2.70 | 7319B | 95 | 200 | 45 | 6.05 |
| 7220B | 100 | 180 | 34 | 3.30 | 7320B | 100 | 215 | 47 | 7.50 |
| 7222B | 110 | 200 | 38 | 4.60 | 7322B | 110 | 240 | 50 | 10.0 |